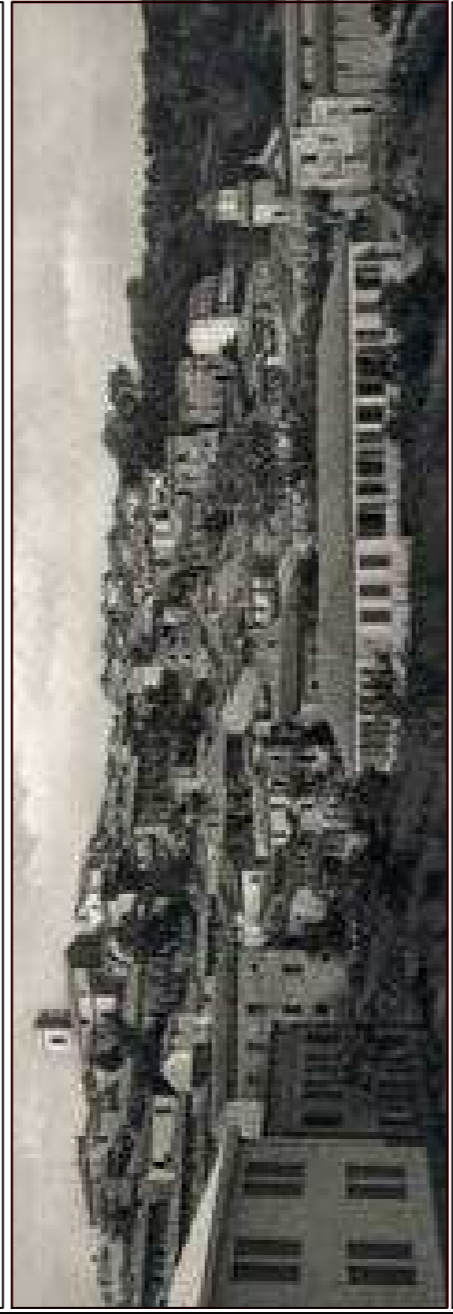








**Comune di Miglierina**  
Provincia di Catanzaro

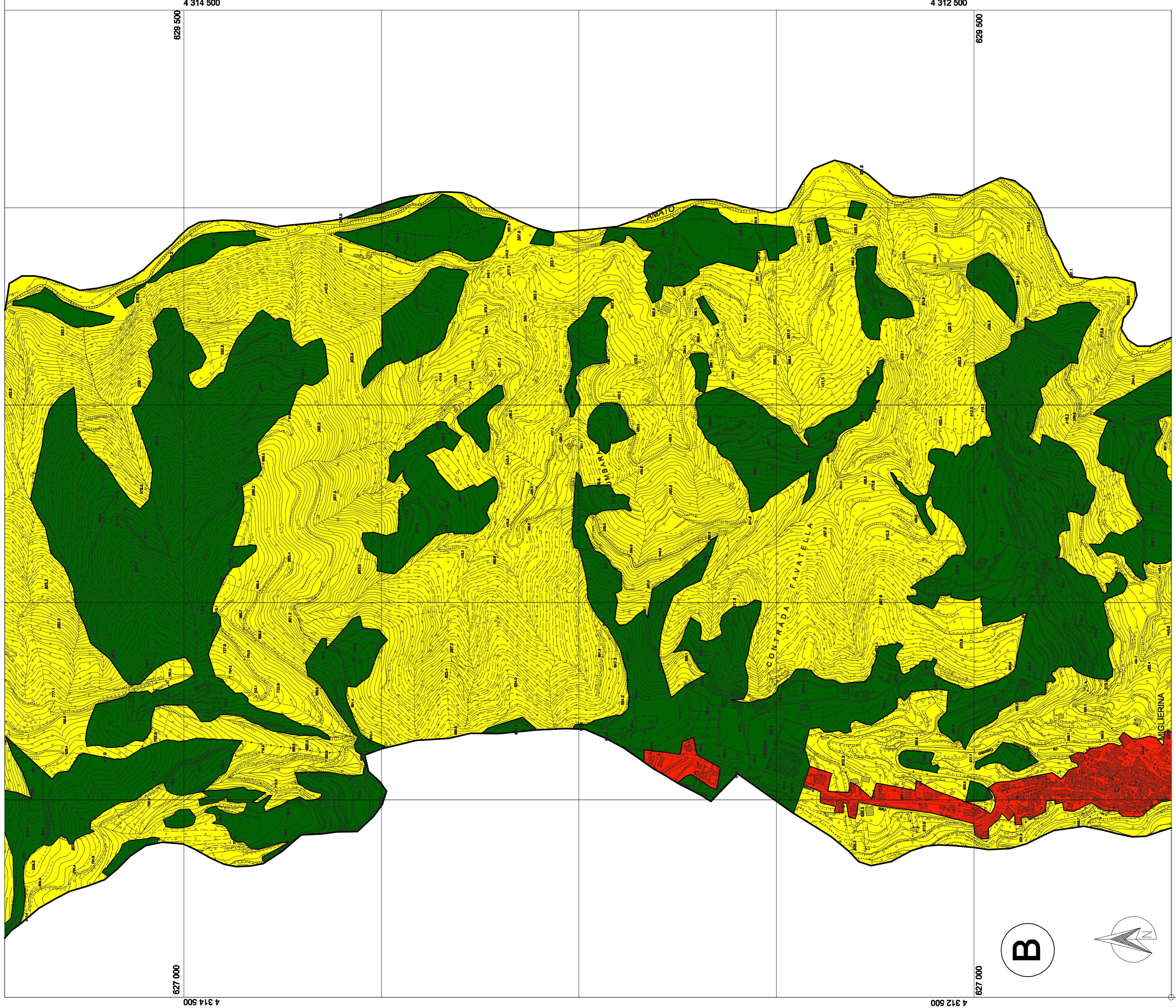


**PIANO STRUTTURALE COMUNALE (P.S.C.)**  
L.R. n°19/02 e ss.mm.ii.

<b>QUADRO CONOSCITIVO</b>	
<b>elaborato</b> TAV. AGR.4/B  <b>scala</b> Scala 1:5.000  <b>data</b> Marzo 2014	<b>Carta della Zonazione Agricola</b>  <b>Coordinamento tecnico ed edilizio:</b> Prof. Arch. Giuseppe LUNETTI  <b>Collaboratori:</b> Arch. Giuseppe CRISTELLI Arch. Michele CERAMANA Arch. Massimo GUZZI  <b>Elaborato da:</b> Ing. Nicola CERAMANA

**Legenda**

-  Confine comunale
-  E2
-  E3
-  E5
-  Infrastrutture
-  Urbano



Vertice di coordinate UTM (Datum WGS84): 6° 44' 00" E 44° 00' 00" N