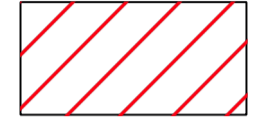


COMUNE DI MIGLIERINA
CATASTO DELLE AREE PERCORSE DAL FUOCO ANNO 2010

LOCALITA': ERBACCI

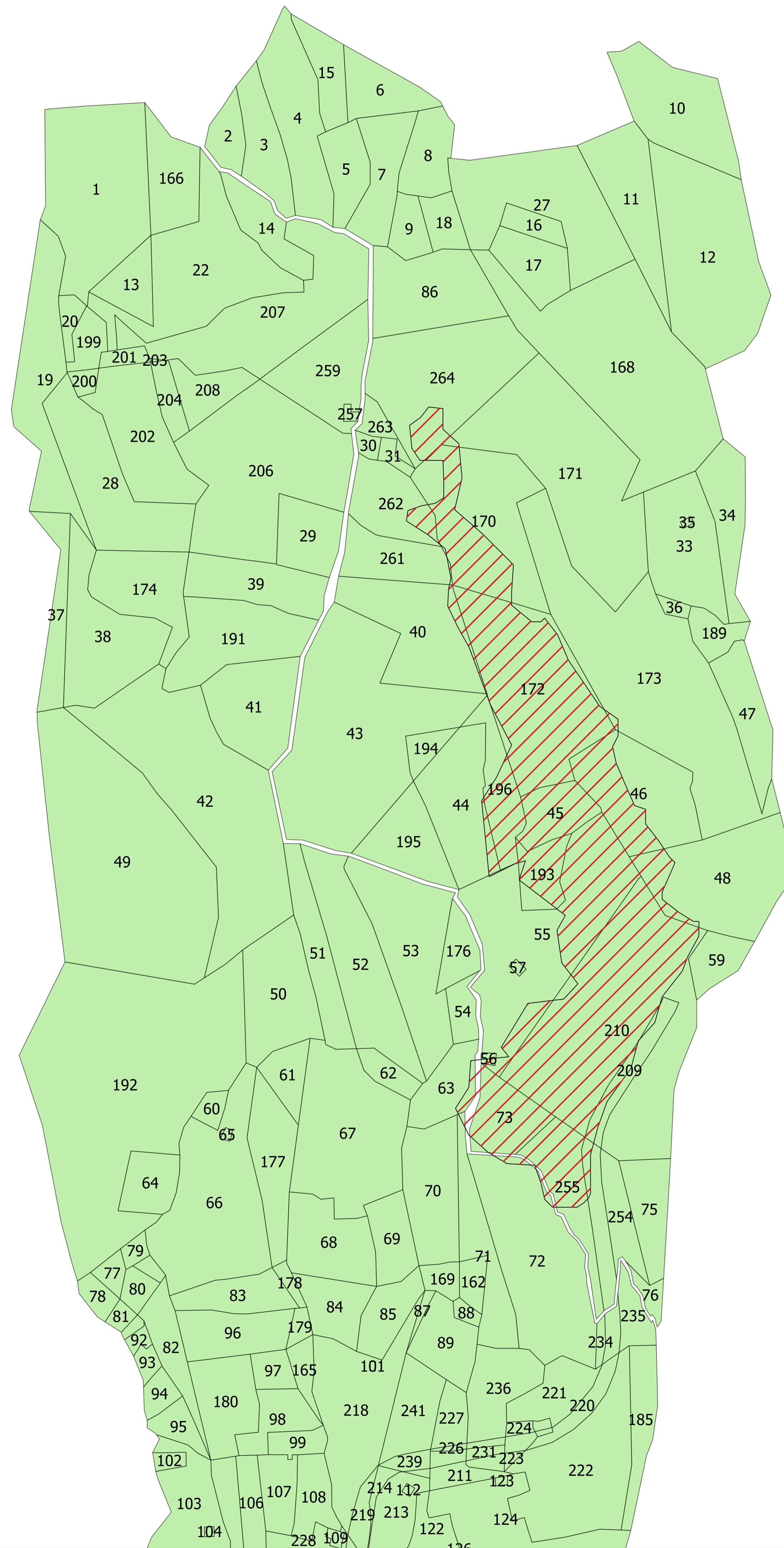
Legenda



AREE PERCORSE DAL FUOCO

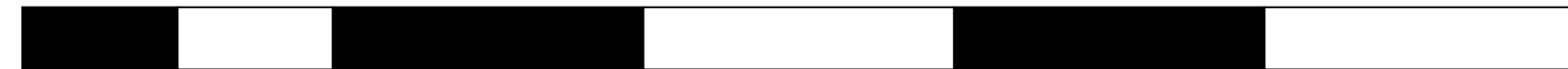


MAPPALI FOGLIO 16



SCALA 1:2000


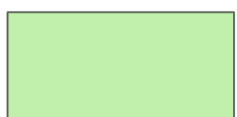
100 0 100 200 300 400 m

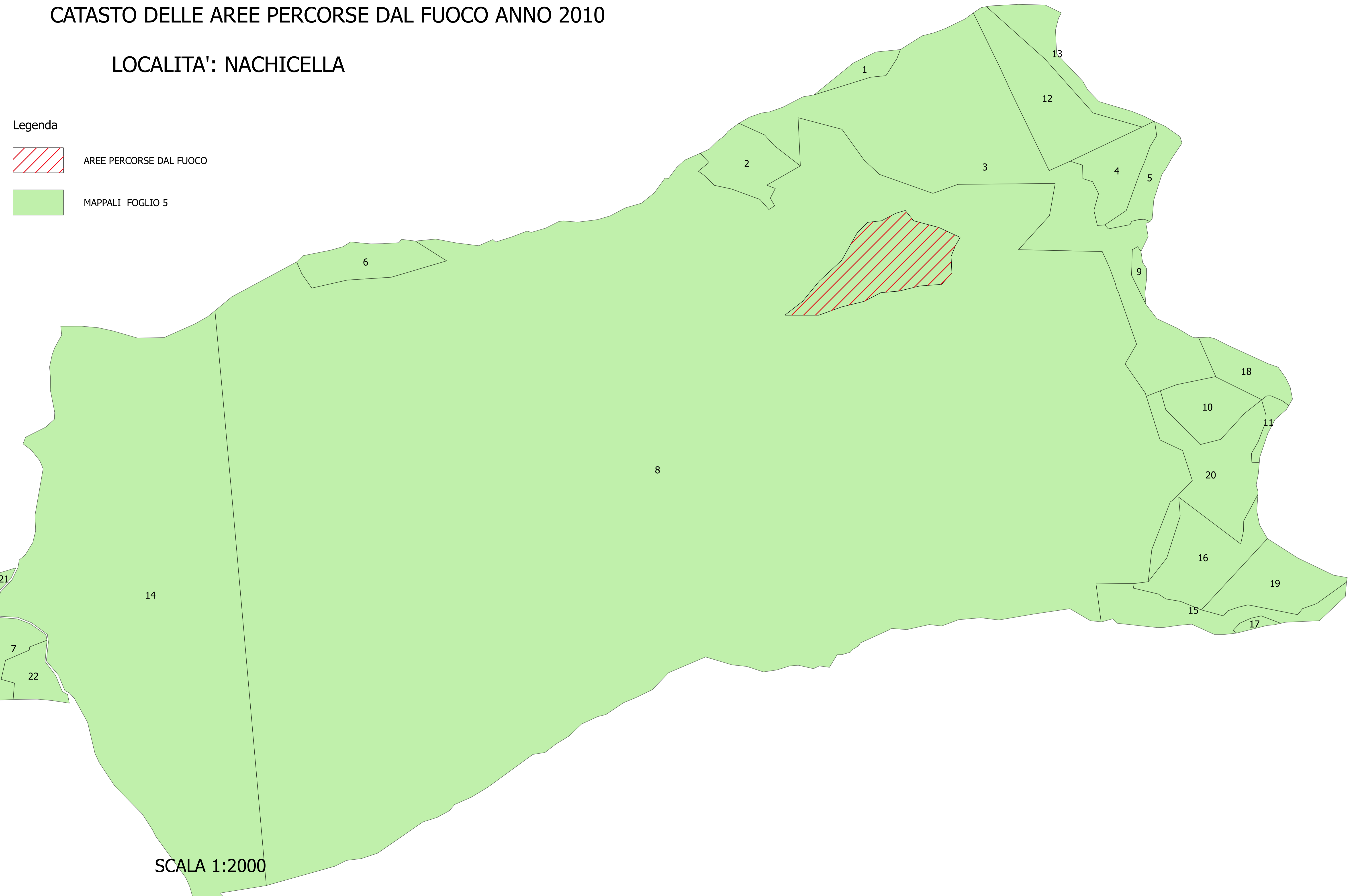


COMUNE DI MIGLIERINA
CATASTO DELLE AREE PERCORSE DAL FUOCO ANNO 2010

LOCALITA': NACHICELLA

Legenda

-  AREE PERCORSE DAL FUOCO
-  MAPPALI FOGLIO 5



SCALA 1:2000

